

Smarter by Design,
Proven by Performance.

Advanced Architectural Products
SMARTci Systems
3393 South M-40 Building #10
Hamilton, MI 49419

269-355-1818
www.smartcisystems.com



CB1-101-0513



ADVANCED
ARCHITECTURAL
PRODUCTS



SMARTER BY DESIGN. PROVEN BY PERFORMANCE.

www.smartcisystems.com | 269.355.1818

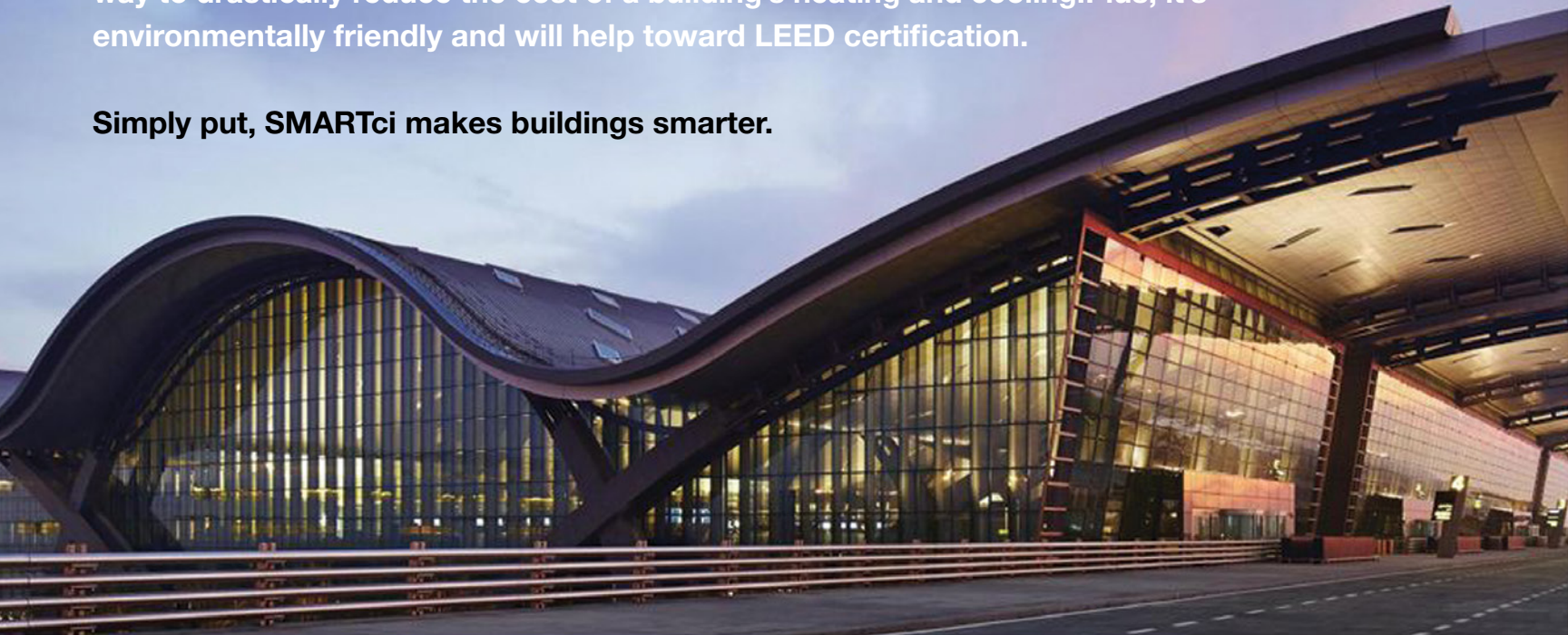


SMARTER BY DESIGN. PROVEN BY PERFORMANCE.

SMARTci is an innovative, complete insulation solution.

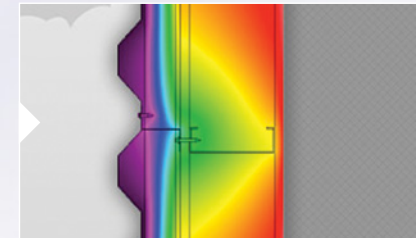
Engineered as a continuous insulation system, SMARTci includes thermally insulated sub-girts, insulation and an engineered installation package. It's a simple way to drastically reduce the cost of a building's heating and cooling. Plus, it's environmentally friendly and will help toward LEED certification.

Simply put, SMARTci makes buildings smarter.

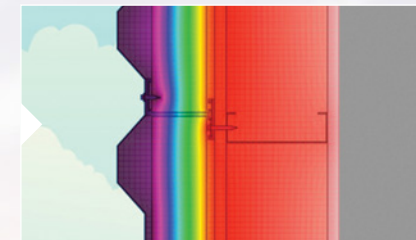


Stud Wall

Conventional System:
Fasteners and Framing
Contribute to Energy Loss



SMARTci System:
Minimizing the Thermal
Impact of Fasteners
and Framing



Why SMARTci

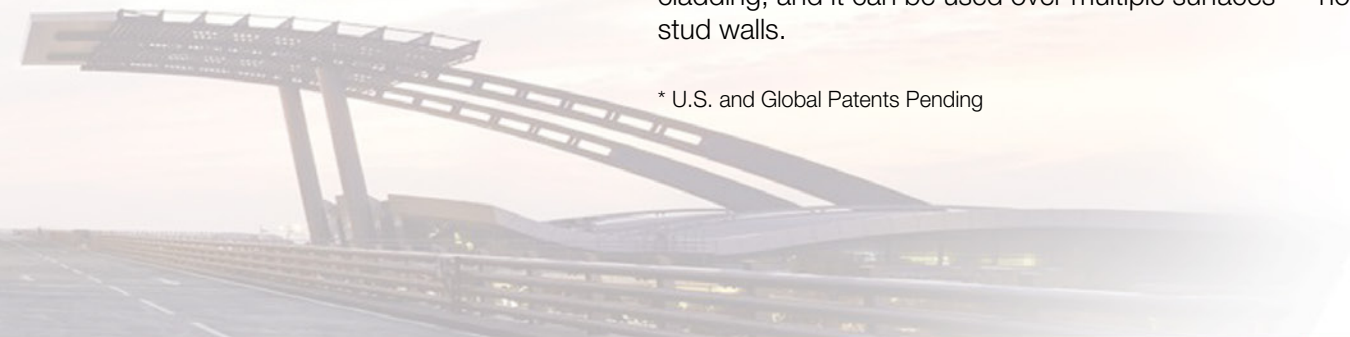
The Problem: Thermal Bridging

When metal is used to connect the exterior components of a building directly to the interior framing, this causes a thermal bridge. This thermal path of least resistance allows heat (or cold) to escape, creating a vulnerability for cold spots and allowing moisture problems. Using materials that eliminate the thermal bridge help avoid unnecessary heating and cooling costs.

The Solution: SMARTci

SMARTci was designed to address the inadequacies of other continuous insulation solutions. It's individual parts were created as a simple, complete solution to help you create smarter buildings. Plus, it's the best assembly to help you earn points toward LEED certification. Unlike other attachment systems, SMARTci completely prevents thermal bridging that are created by metal fasteners and framing. It doesn't create cold spots for condensation inside your walls. It has a universal attachment design for virtually any cladding, and it can be used over multiple surfaces — not just stud walls.

* U.S. and Global Patents Pending



ADVANCED
ARCHITECTURAL
PRODUCTS



SMARTci was created with one goal in mind: to make buildings more efficient. Specially designed to block off heat gaps that other solutions leave, SMARTci's thermal efficiency makes it a long-term investment in your building.



The SMARTci System

What is SMARTci?

SMARTci is an innovative, complete insulation solution. Engineered as a continuous insulation system, SMARTci includes composite girt/attachment members (called GreenGirt™), insulation, an engineered installation package, and optional accessories.

GreenGirt™ joins the building cladding and insulation to a building structure. It's an insulated composite sub-framing component inside the SMARTci assembly.

ENVIRONMENTALLY FRIENDLY

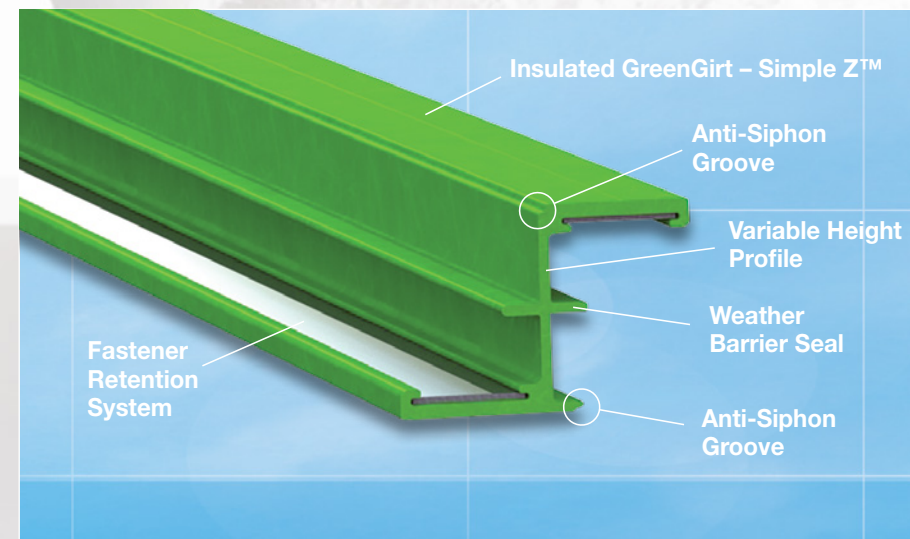
Yes. SMARTci is a recyclable building life product that will help in LEED certification. It creates significant energy savings and reduced carbon emissions. GreenGirt™ uses naturally sourced bioresin and recycled glass materials.

UTILIZING PROVEN TECHNOLOGY

SMARTci has been field-tested via finite element analysis with ASTM and UL agencies. All components and materials in the SMARTci System have been vigorously tested and proven in the construction industry.

SMARTci IS BETTER THAN STEEL

It is superior to steel structurally and thermally. GreenGirt™ is designed to provide the same loading capabilities of a Z girt of equivalent depth. Regular metal girts and through-fasteners create thermal bridging in the insulation system, but GreenGirt™ eliminates these. Furthermore, GreenGirt™ is not susceptible to moisture, corrosion or electrochemical reactions.



Applications

Can I use standard building cladding and still achieve superior thermal performance?

Yes. This level of thermal performance was once reserved for a select few products, but now you can use SMARTci on virtually any cladding you wish.

What type of substrates can be used with SMARTci?

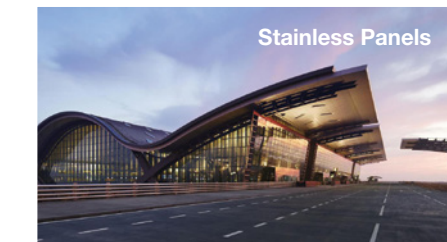
Stud walls, masonry, concrete, and roof decks.

What type of Insulation can be used with SMARTci?

Polyisocyanurate, polystyrene, mineral wool, fiberglass and spray foam.

Has it been fire tested?

Yes. GreenGirts have ASTM E84 Class A ratings, UL94 V0 and is compliant with NFPA 285 requirements.



Installation

Does it take longer to install than other solutions?

No. SMARTci installs faster than traditional methods. GreenGirt's™ insulation retention cleat eliminates inefficient and costly methods of through-fastening.

Is it complicated?

No. The basic SMARTci System is very simple. It consists of two basic pieces: the girt and the insulation panel.

Is SMARTci a package?

Yes. SMARTci a complete solution. It is shipped as a package, including Engineering (shop drawings, installation instructions, bill of materials), GreenGirts™, GreenGirt™ inserts, and Insulation.

Other materials such as fasteners, weather barrier wrap, insulation tape, sealants, etc. are available as needed. We have everything you need for a total continuous insulation solution.

Support

What kind of engineering support does SMARTci offer?

Every SMARTci package includes either an installation submittal package or custom configurations package. The installation submittal package includes basic layout, details and directions. The custom configurations package contains complete engineered drawings for elevation-specific layout and attachment connections.

Does SMARTci offer design assistance?

SMARTci Systems Inc can work with system designers to determine the actual wall assembly values and optimum construction. All SMARTci insulation system R values are determined via ASTM c236 Guarded Hot Box methodology and 3D finite element analysis modeling. All SMARTci insulation systems are designed and engineered to insure optimum performance.



Experience
Freedom of Design



Features & Benefits

What are the benefits of using SMARTci?

SMARTci can save millions of dollars on heating and cooling costs, depending on the building's size and location. The cost recovery period can be between 2 and 10 years, depending on the application.

Wrap Your Building in Energy Savings

How is SMARTci different from other CI systems?

It has zero thermal short fasteners.

It creates zero cold spots for condensation.

It is a universal attachment system for various claddings.

It can be used over multiple surfaces — not just stud walls.

It has fewer parts than other systems, allowing for quick installation.

See the differences here at our web site
www.smartcisystems.com



SMARTER BY DESIGN. PROVEN BY PERFORMANCE.

www.smartcisystems.com | 269.355.1818